



SCOOTERS

The Hawai'i Convention Center Business Center has mobility scooters for rent. To make a reservation, please contact our Business Center at HCCBusinessCenter@hccasm.com or (808) 792-6699.

WATER FOUNTAINS

All water fountain stations in the Center include a water fountain that is accessible to wheelchairs. Drinking cups are also provided for your convenience.



WHEELCHAIRS

Meeting planners or attendees who require a wheelchair for use during an event should make arrangements directly with a wheelchair rental company. For more information, please call the Events Department at (808) 943-3500.



CONVENTION CENTER

Where Business and Aloha Meet

ADA ACCESSIBILITY BROCHURE



HOTLINES

Directions/Parking: (808) 943-3081

Public Events: (808) 943-3083

Tours: (808) 943-3500

1801 Kalakaua Avenue

Honolulu, HI 96815

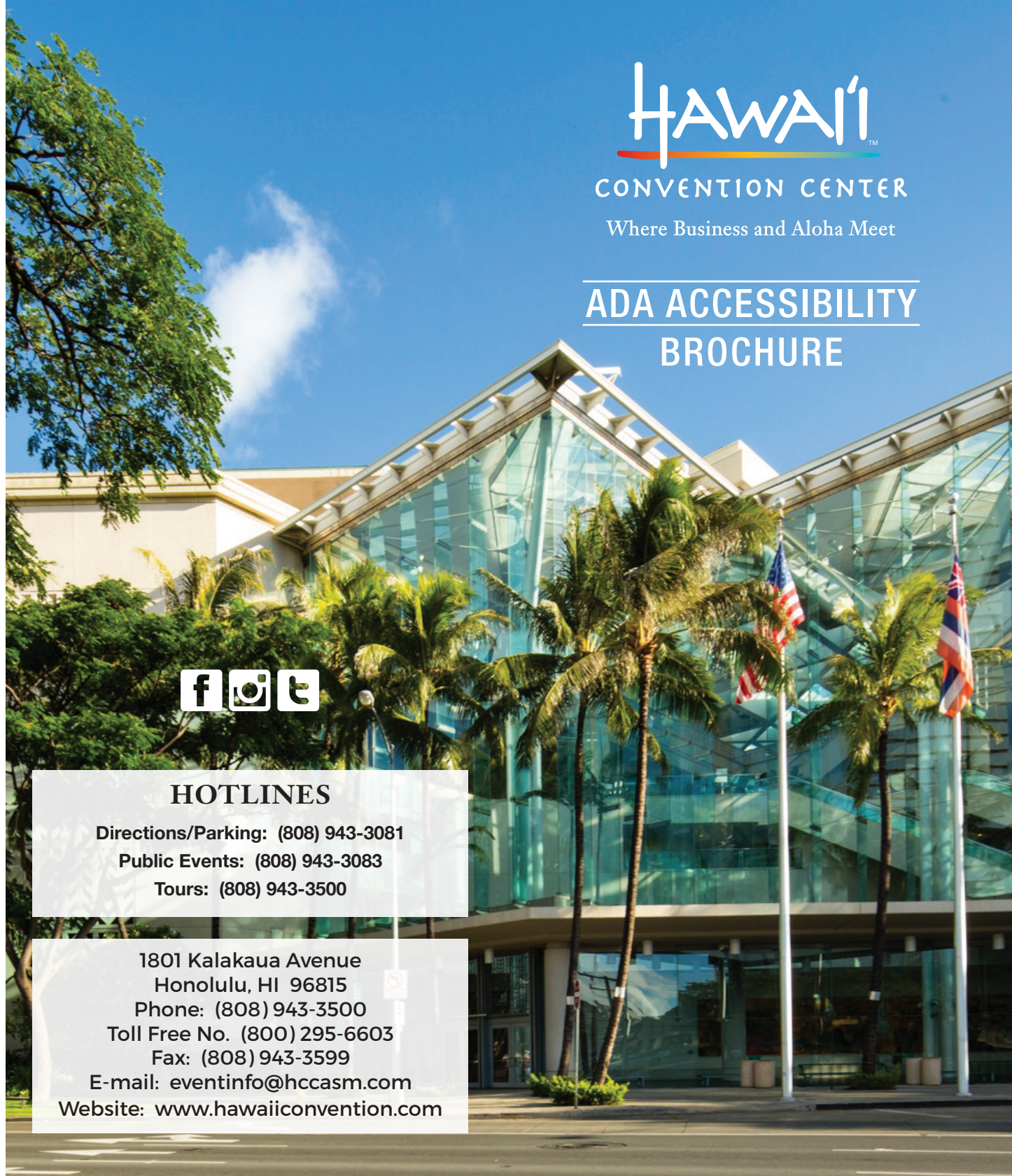
Phone: (808) 943-3500

Toll Free No. (800) 295-6603

Fax: (808) 943-3599

E-mail: eventinfo@hccasm.com

Website: www.hawaiiconvention.com



ASSISTIVE LISTENING SYSTEMS

The Hawai'i Convention Center is equipped with assistive listening systems. They are available through the audio-visual office by calling (808) 943-3041 or dialing 3041 from any house phone for reservations.

AUTOMATIC DOORS

Automatic doors have been installed at the front entrance on Atkinson Drive for hands-free access to the lobby



AUXILIARY AIDS

Permanent wheelchair lifts are located in our Lili'u (Room 310) and Emalani (Room 320) Theaters. Stages and risers can be made accessible with a portable platform lift or ramp.

SERVICE ANIMALS

Service or guide animals are allowed in the Hawai'i Convention Center facility. Service animals must be on a leash or harness, under the control of the handler and must be housebroken. The animal handler will be responsible for their sanitary needs.

BRAILLE TEXT

The Center's meeting rooms and elevator signs contain Braille text and raised characters for guests with vision loss. If materials for an event are needed in large print, Braille or audio formats, please contact your event organizer who will be able to assist. If materials related to the Center are needed, please contact your Event Manager or email eventinfo@hccasm.com.

ELEVATORS

All floors of the Center are accessible by elevator. Each elevator is equipped to accommodate persons needing assistance. Elevators are located in the lobby and from the Ala Wai Promenade.

ENTRANCE

To accommodate wheelchair drop-off, sloped ramp entrances are located at the main entrance on Atkinson Drive.

FIRE ALARMS

Emergency warning systems are equipped with both audible and visual strobe alarms.

MAPS

Maps indicating accessibility aids are provided on digital display boards located on all floors of the Center.

NURSING POD

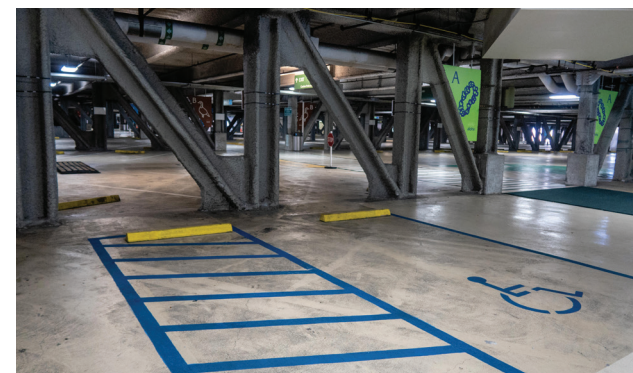
HCC now offers a private, comfortable and clean space to pump or nurse. This ADA compliant Mamava lactation pod includes two benches, dual outlet and USB port, shelf, mirror and coat hook and secure access via the Mamava app or using an access code. Look for the nursing pod located at the Lobby Level near Exhibit Hall 1.



PARKING

Accessible parking for both regular vehicles and vans is available at the Center. Alternate arrangements can be made for vans and other vehicles which cannot be accommodated in the parking garage by calling (808) 943-3000. Vehicle clearance in the parking garage is 8'11".

Two accessible unloading and loading zones are available at the Atkinson Drive main entrance.



RESTROOMS

All restrooms are equipped with accessible facilities; including height compliant, sinks, hand towel dispensers, hand sanitizer dispensers, urinals and toilet stalls. All restroom facilities are completely hands free including the entrance to the restroom. A private accessible restroom is located in the Lobby.

THEATRE SEATING

Wheelchair accommodations are available in both the Lili'u (Room 310) and Emalani (Room 320) Theaters. There are wheelchair lifts in both theaters to assist those who wish to be seated on the upper level.

